








Step 3: Evaluate Your Site: Soil Texture

Particle Type		Water Movement (Drainage)	Water Holding	Nutrient Holding
Sand 		Fast	No	No
Silt 		Medium	Medium	Medium
Clay 		Slow	Yes, once wet	Rich!
Loam Mixture of all particle types		Medium	Yes	Yes

Step 3: Evaluate Your Site: Soil Texture

Determining Soil Texture

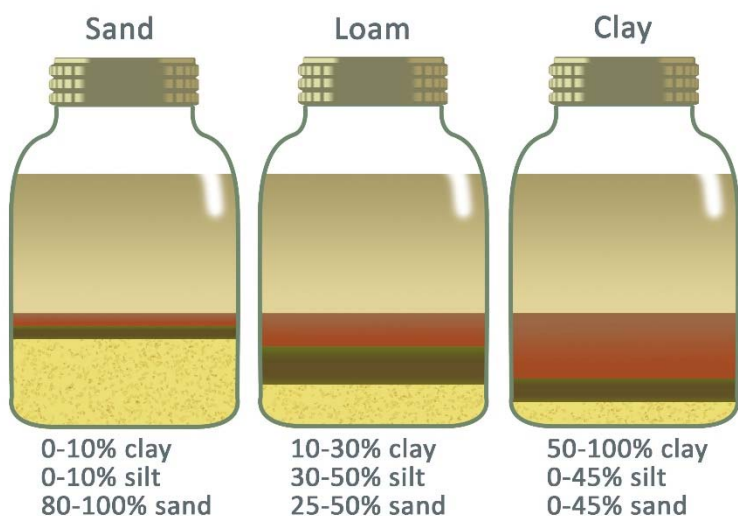
- Soil Sampling: Dig a hole
 - Remove mulch or surface matter
 - Dig down approx. 6”
 - Take sample from side of hole



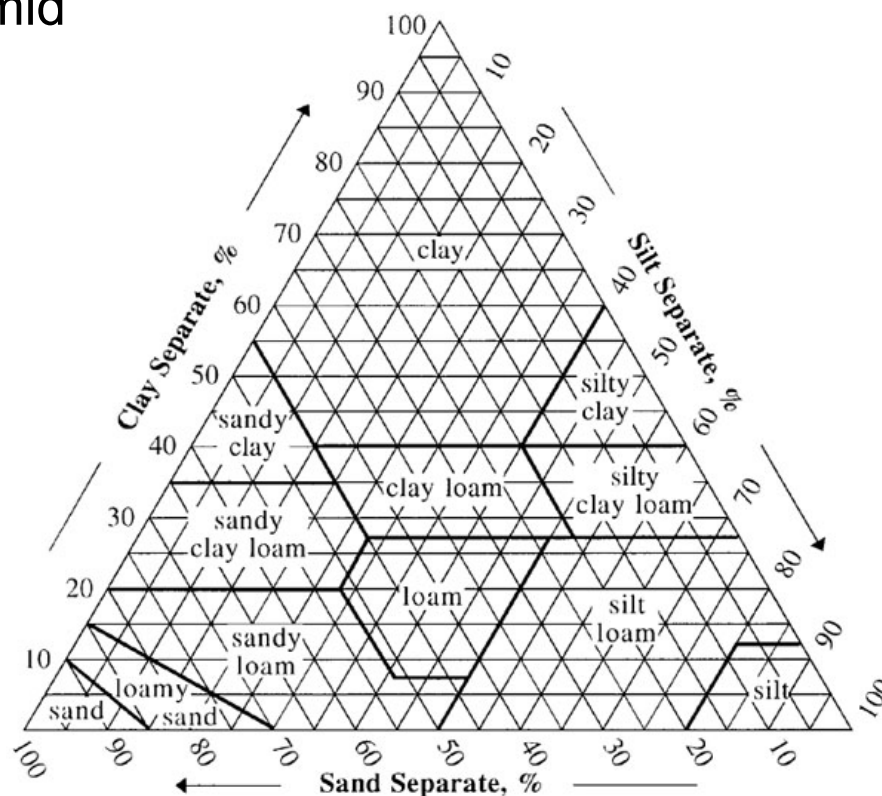
Step 3: Evaluate Your Site: Soil Texture

Determining Soil Texture

- USDA Soil Texture Pyramid



Jar Testing for Soil Texture

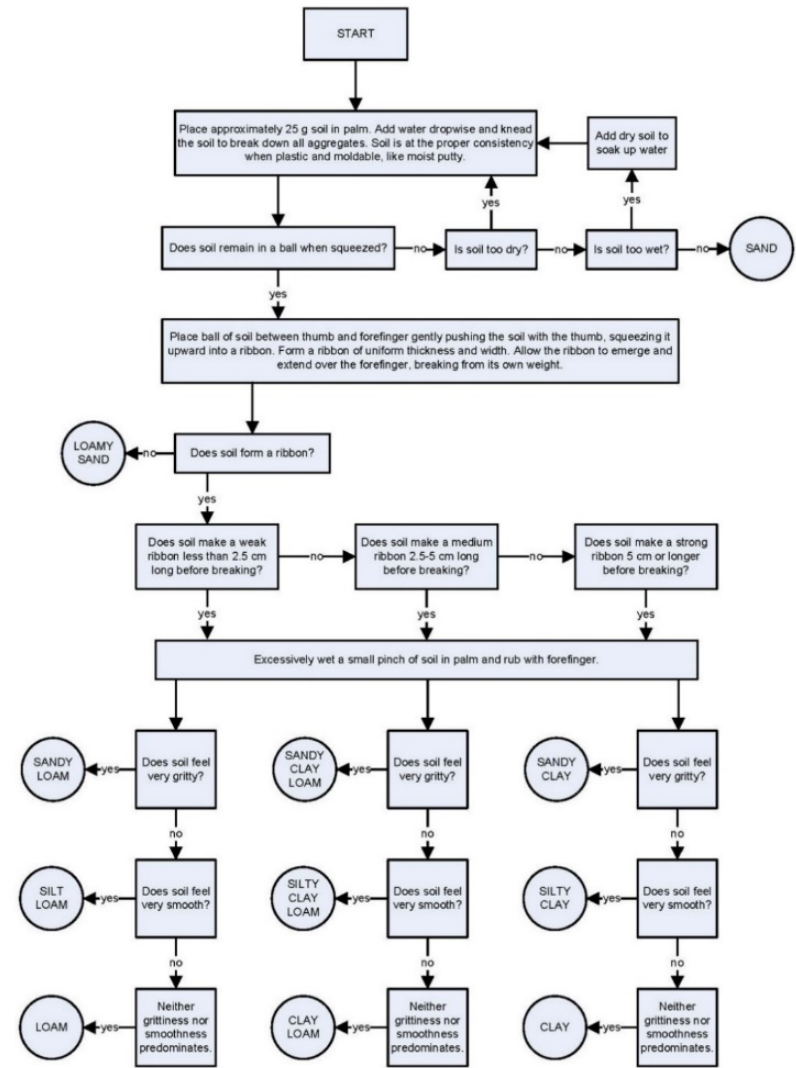


USDA Soil Texture Pyramid

Step 3: Evaluate Your Site: Soil Texture

Determining Soil Texture

- Want more?
- Find the “Thien Feel Test” on line



Taken from USDA-NCRS (Modified from S.J. Thien. 1979. *A flow diagram for teaching texture by feel analysis*. Journal of Agronomic Education. 8:54-55.)

Step 3: Evaluate Your Site: Soil Texture

Determining Soil Texture

- “Thein Feel Test”
 - Wet the soil sample to playdough consistency
 - Make a ball and poke it:
 - Does it fall apart?
 - Does it hold together?
 - Squeeze a ribbon:
 - Less than 1 inch?
 - Between 1 inch and 2 inches?
 - More than 2 inches?
 - Wet it excessively and feel it:
 - Is it slippery?
 - Is it gritty?

